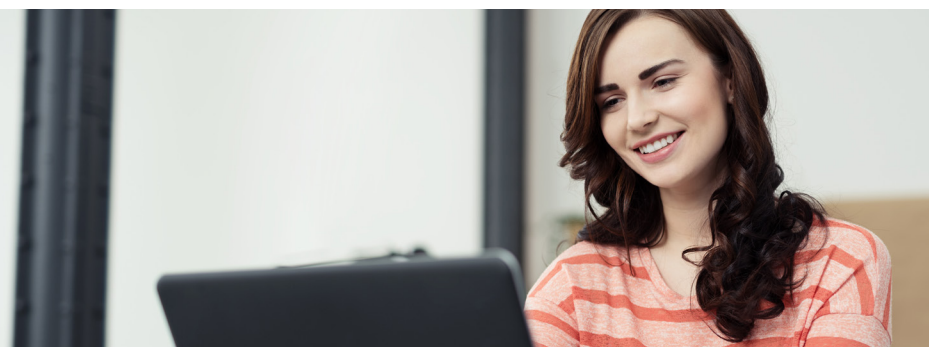


Our e-learning range of training is listed below. Individual courses cost £9.54 while the Care Certificate full package costs £59.94 per person.



## Care Certificate

Care Certificate – Full Package	S06: Communication	S10: Safeguarding Adults
S01: Understand Your Role	S07: Privacy & Dignity	S11: Safeguarding Children
S02: Your Personal Development	S08: Fluids & Nutrition	S12: Basic Life Support
S03: Duty of Care	S09: Dementia & Cognitive Issues	S13: Health & Safety
S04: Equality & Diversity	S09: Learning Disability Awareness	S14: Handling Information
S05: Work in a Person Centered Way	S09: Mental Health Awareness	S15: Infection Prevention & Control

## e-learning CPD

Allergen Awareness	Diabetes Awareness	Health & Safety
Asperger Syndrome	Dignity & Respect	Lone Working Essentials
Autism Awareness	Disability Awareness	Manual Handling of Objects
Basic Life Support	Discipline & Grievance	Nutrition Awareness
Bullying & Harassment	Duty of Care	Reablement
Care Planning & Record Keeping	Equality & Diversity	RIDDOR
Carers Awareness	Equality, Diversity & Human Rights	Safeguarding Children
Communication	Falls Prevention	Safeguarding of Vulnerable Adults
Complaints Handling	Fire Safety	Stress Awareness
Consent	Food Safety Level 1	Stroke Awareness
COSHH	Food Safety Level 2 in Catering	Substance Misuse Awareness Level 3
Customer Service	Food Safety level 2 in Manufacturing	Time Management
Data Protection	Food Safety Level 2 in Retail	Understand Your Role
Dementia – Types of Dementia	HACCP	